

# Burnley.

HOMES



## PORTWAY 27

**\$612,000** *INCL. FHB GRANT*

AREA: 448m<sup>2</sup> FRONTAGE: 14m



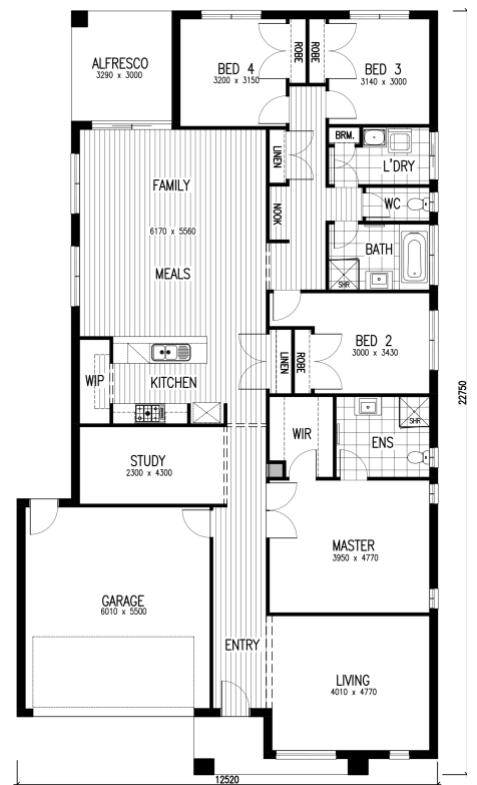
Land Size: 14m x 32m 448SQM

House Size: 27 SQUARE

## THE GROVE ESTATE

### INCLUSIONS

- 2590mm ceiling height throughout
- 20mm stone bench to kitchen, Bath, Ensuite and Laundry
- 900mm Kitchen Appliances
- 600mm Dishwasher
- Timber look laminate flooring throughout except wet area and bedrooms
- Builders range ceramic tiles to Wet areas
- Carpet to all bedrooms and 2nd living area
- Remote control to garage with colourbond sectional door in contemporary profile
- Tiled shower bases
- Split system cooling to family area from Builders range
- Colour through concrete driveway to meet front porch
- LED downlights to Entry, Poarch, corridor, Family and Meal area only



Suite 7, 114/22-30 Wallace Ave, Point Cook VIC 3030 [burnleyhomes.com.au](http://burnleyhomes.com.au)  
p 1300 912 609 e [info@burnleyhomes.com.au](mailto:info@burnleyhomes.com.au) ABN 89 618 630 818

Facade is used for Illustration Only, Façade subject to developer approval Façade image is an artist impression for illustrative purposes only and may show decorative items not included in the base price. Please contact Burnley Homes for house specific drawings and any further information regarding the pricing and specification of this home. Block and building dimension may vary from the illustration and the details shown.